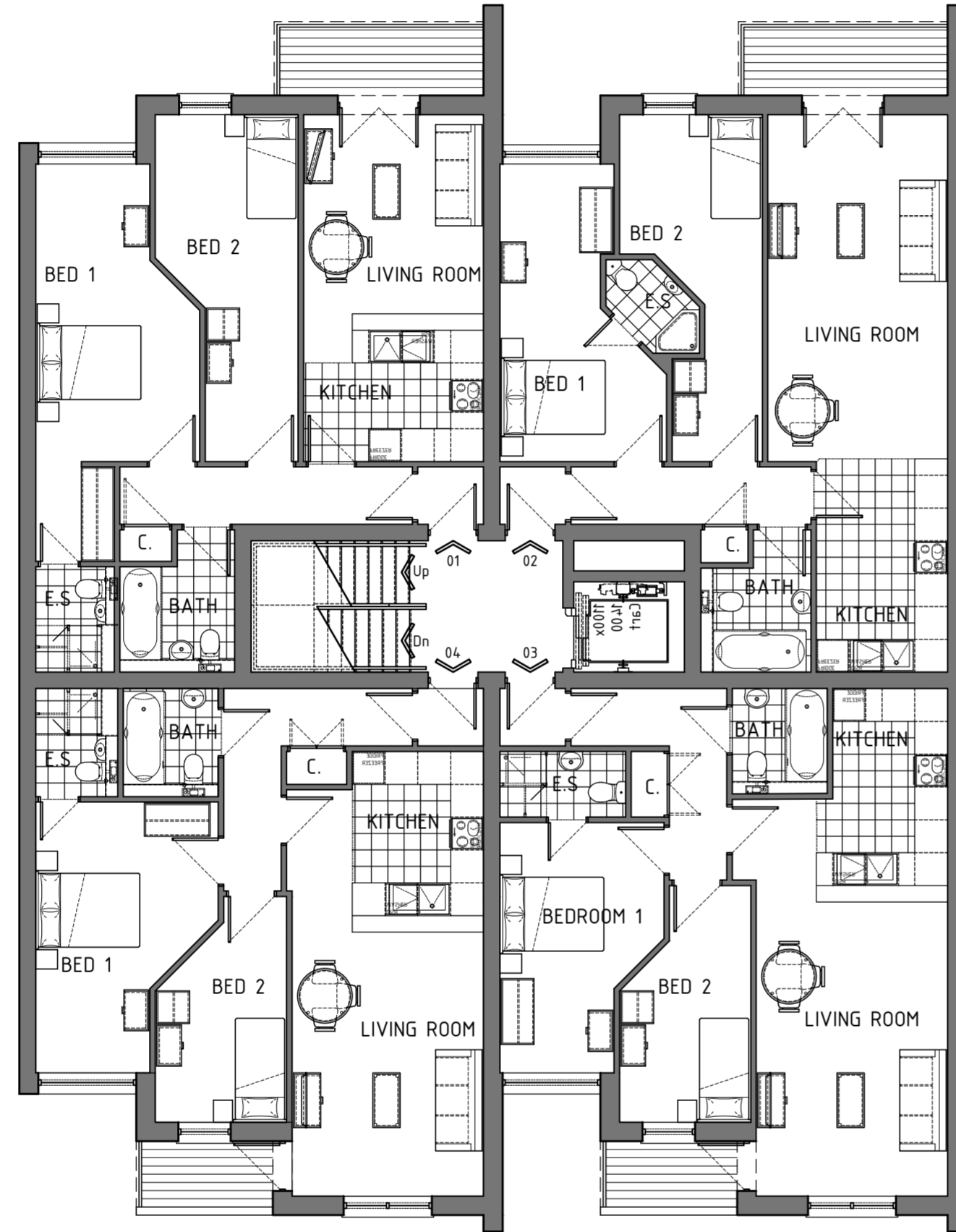


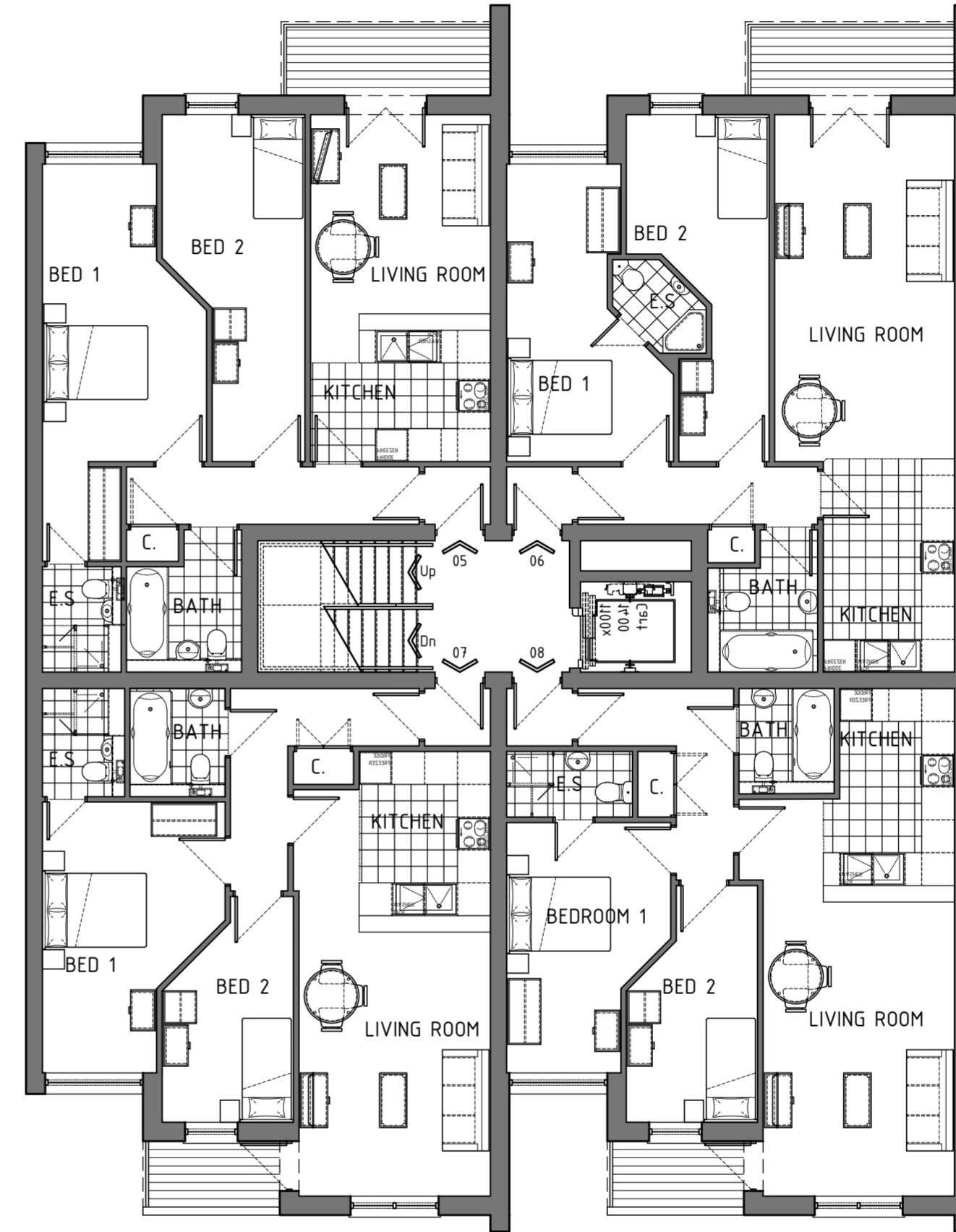
# 177 LONDON ROAD, SOUTHEND-ON-SEA

MIXED-USE SCHEME: 16NO. RESIDENTIAL APARTMENTS + 2NO. COMMERCIAL UNITS.

SCALE BAR 1:100



AS PROPOSED: FIRST FLOOR PLAN



AS PROPOSED: SECOND FLOOR PLAN

AS PROPOSED: FIRST + SECOND FLOOR PLAN

## GENERAL NOTES

The copyright in all designs, drawings, schedules, specifications and any other documentation prepared by DAP Architecture Ltd. in relation to this project shall remain the property of DAP Architecture Ltd. and must not be reissued, loaned or copied without prior written consent.

Do not scale from this drawing, use figured dimensions only.

Prefer larger scale drawings.

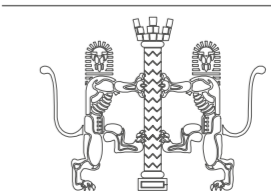
All dimensions are in millimeters (mm) unless otherwise noted.

Check all relevant dimensions, lines and levels on site before proceeding with the work.

This drawing is to be read in conjunction with all Architect's drawings, schedules and specifications, and all relevant consultants' and/or specialists' information relating to the project. Refer all discrepancies to DAP Architecture Ltd.

REV.	DESCRIPTION	DATE
		
ARCHITECTURE LTD		
PROJECT		
RESIDENTIAL DEVELOPMENT		
DRAWING		
AS PROPOSED		
FIRST + SECOND FLOOR PLAN		
CLIENT		
GREEN TURTLE CAY LTD		
ADDRESS		
177 LONDON RD		
SOUTHEND-ON-SEA		
SS1 1PW		
DATE	SCALE	DRAWN BY
15.12.16	1:100 @ A2	LC
		CHECKED BY
		DAP
PROJECT No.	DWG No.	REVISION
703.201.00		

ISSUE STATUS  
PLANNING



a. 3 + 5 Hospital Approach  
The Millars  
Chelmsford  
ESSEX, CM1 7FA  
e. studio@daparchitecture.co.uk  
t. (0844) 854 9007  
w. www.daparchitecture.co.uk

CHELMSFORD

LONDON

BIRMINGHAM